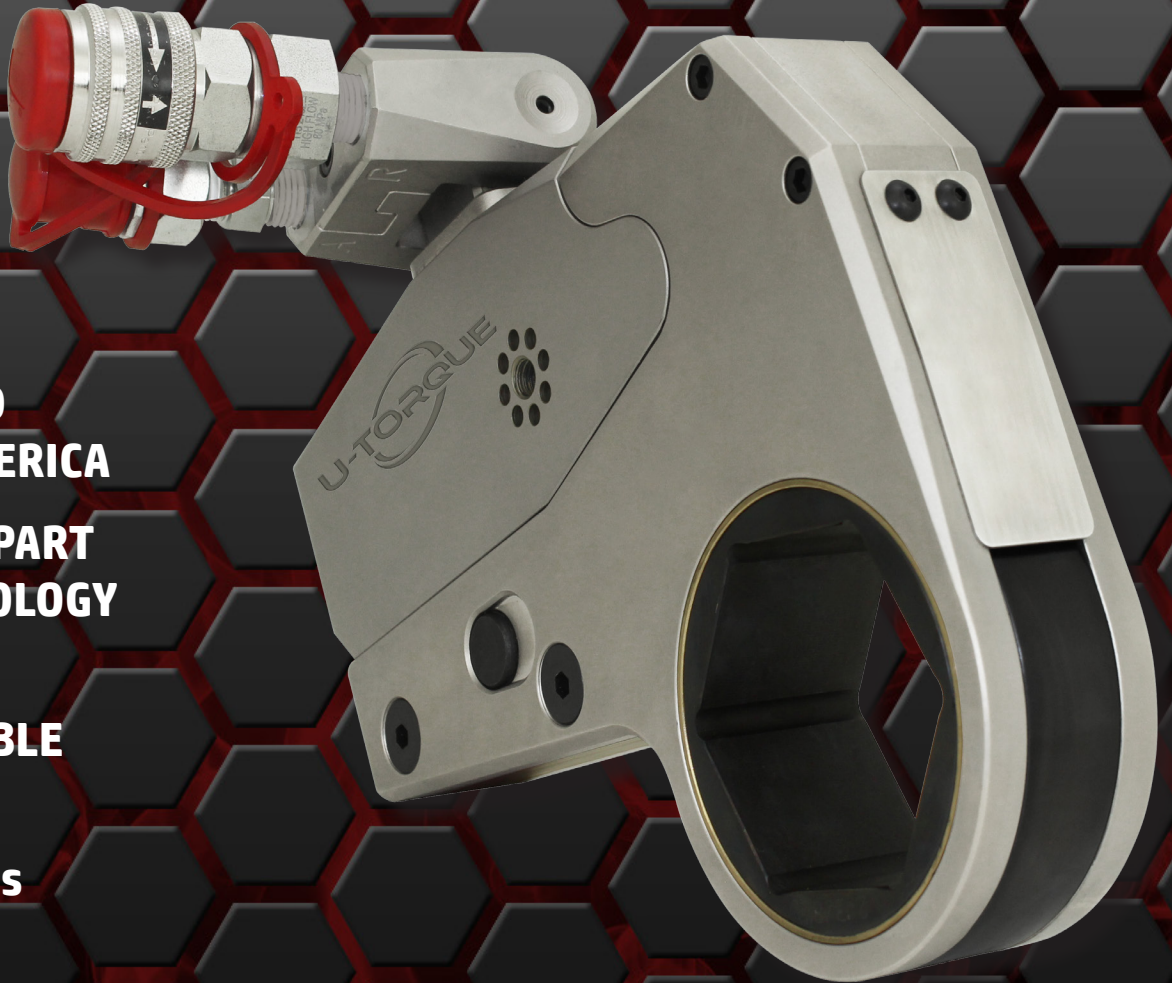




HYDRAULIC FASTENING SYSTEMS

TXU SERIES LIMITED CLEARANCE HYDRAULIC TORQUE MACHINE

- **CERTIFIED AIRCRAFT QUALITY ALLOY CONSTRUCTION**
- **DESIGNED AND MANUFACTURED ENTIRELY IN AMERICA**
- **THREE MOVING PART TORQUE TECHNOLOGY**
- **FULLY SYSTEM INTERCHANGEABLE**
- **TORQUE RANGE TO 16,600 Ft/Lbs**



MADE IN AMERICA



SPECIFICATIONS

TXU SERIES

HYDRAULIC TORQUE MACHINE

Model	TXU-2		TXU-4		TXU-8		TXU-16	
Min Torque (ft/lbs)	192		395		830		1560	
Max Torque (ft/lbs)	1928		3950		8630		16600	
Output Accuracy	+/- 3%		+/- 3%		+/- 3%		+/-3%	
Repeatability	100%		100%		100%		100%	
Duty Cycle	100%		100%		100%		100%	
Cylinder Weight	4.0lbs / 1.8kg		6.9lbs / 3.1kg		12.5lbs / 5.7kg		16.0lbs / 7.3kg	
Link Weight From (lbs)	2.40		5.40		11.90		21.0	
Link Weight To (lbs)	3.50		7.60		14.50		28.0	
Link Weight From (kg)	1.0		2.4		5.5		9.5	
Link Weight To (kg)	1.5		3.4		6.5		13.0	
Hex range from	3/4" / 19mm		1" / 27mm		1 7/8" / 49mm		2 3/16" / 55mm	
Hex range to	2 9/16" / 65mm		3 1/8" / 80mm		4 5/8" / 120mm		5 5/16" / 135mm	
Length 1	6.45"	163.8mm	7.87"	199.9mm	10.18"	258.6mm	12.93"	328.4mm
Length 2	5.99"	152.1mm	6.55"	166.4mm	7.34"	186.4mm	8.2"	208.2mm
Width 1	1.25"	31.8mm	1.63"	41.4mm	2.05"	52.1mm	2.5"	63.5mm
Width 2	2.19"	55.6mm	2.26"	57.4mm	2.26"	57.4mm	2.26"	57.4mm
Radius Range From (in/mm)	0.37"	9.6mm	0.41"	10.5mm	0.56"	14.2mm	0.68"	17.1mm
Radius Range To (in/mm)	0.59"	15.0mm	0.77"	18.7mm	0.93"	21.0mm	1.68"	25.9mm
Height 1	3.84"	97.5mm	4.93"	125.2mm	6.18"	157.0mm	7.58"	192.5mm
Height 2	1.11"	28.2mm	1.30"	33.0mm	1.30"	33.0mm	1.30"	33.0mm

